

GyroShift 3" Wall Mount Cylinder

25W LED Downlight
Round

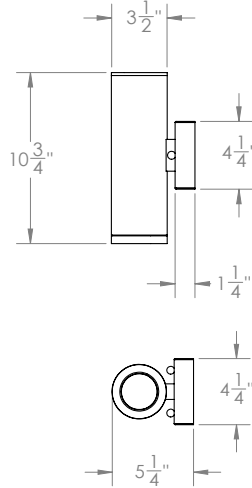
Catalog #:

Type:

Project:

Date:

Notes:



STANDARD FINISHES

ABL (Aegean Blue)	PNC (Painted Natural Copper)
BB (Burnished Bronze)	RD (Red)
BK (Gloss Black)	SGR (Sage Green)
BLU (Blue)	SND (Sand)
DVG (Dove Gray)	SS (Satin Silver)
FLG (Flannel Gray)	TBZ (Textured Bronze)
GA (Galvanized)	TGP (Textured Graphite)
GWT (Gloss White)	TNG (Tangerine)
LG (Lime Green)	TTL (Tahitian Teal)
MB (Matte Black)	WT (Semi Gloss White)
MBL (Midnight Blue)	YEL (Yellow)
PNA (Painted Natural Aluminum)	

Electrical Data

CCT	CRI	Wattage	Delivered Lumens	Efficacy
2700K	90 CRI	25W	1550 lm	62 lpw
3000K	90 CRI	25W	1640 lm	65 lpw
3500K	90 CRI	25W	1725 lm	69 lpw
4000K	90 CRI	25W	1795 lm	72 lpw
Warm Dim	-	10W	608 lm	61 lpw

Lumens will vary depending on CCT, optic & lens option

Specifications

Field Replaceable LED Light Engine

- 25W LED with 2 SDCM binning
- 2700K, 3000K, 3500K and 4000K at 90 CRI
- 10°, 30° and 50° optics included
- 45° adjustability with 360° aiming

Field Replaceable Dimming Driver

- Multiple dimming drivers available
- Power factor > 0.9, 50/60Hz

Downlight Cylinder

Utilizes one LED to illuminate in one direction

Mounting

Square 4-1/4" x 1-1/4" canopy included with standard universal dim driver.
(7-1/2" x 6" x 1-1/4" canopy included with Lutron and eldoLED drivers)

Finishes

Available in many colors with optional coastal coating to protect finish in coastal environments

Listing / Warranty

- Five (5) year limited warranty
- UL listed to US and Canadian standards for damp location



Order Matrix

GyroShift 3" Wall Mount Cylinder (Example: LW3-SFT-10S2710ABL-NLNL-0)

Series	Wattage	Driver	CCT / CRI	Optic	Finishes	Coastal Coating Option	Media 1	Media 2	Rev
LW3-SFT (Round)	-10 (10W)	S² (ERP, Universal Dim, Triac/ELV/0-10V 1% 120-277V) L1¹ (Lutron Hi-lume® 2-Wire 1% 120V) L3¹ (Lutron Hi-lume® Fade-to-Black 1% 120-277V) EL1¹ (eldoLED DALI 1% 120-277V) EL2¹ (eldoLED 0-10V 1% 120-277V) DMX¹ (DMX 1% 120-277V)	27 (2700K/90 CRI)	10	ABL	(blank) (No coating)	-NL (No Lens)	NL	-0
	-15 (15W)		30 (3000K/90 CRI)	30	BB	-C (Coating)	-CL (Clear Lens)	CL	
	-20 (20W)		35 (3500K/90 CRI)	50	BK		-FR (Frosted Lens)	FR	
	-25 (25W)		40 (4000K/90 CRI)		BLU		-MP (Solite Lens)	MP	
			WD* (1850-3000K)		DVG		-LS (Linear Spread)	LS	
					FLG	-HEX* (Hex Louver)			
					GA	-WW* (Wall Wash)			
					GWT				
					LG				
					MB				
					MBL				
					PNA				
					PNC				
					RD				
					SGR				
					SND				
					SS				
					TBZ				
					TGP				
					TNG				
					TTL				
					WT				
					YEL				

1. Includes larger canopy
2. Forward and reverse dimming at 120V only

Media

S3-LENS-CL-0 (Clear Lens)	S3-LENS-LS-0 (Linear Spread)
S3-LENS-FR-0 (Frosted Lens)	S3-LENS-HEX-0* (Hex Louver)
S3-LENS-MP-0 (Solite Lens)	S3-LENS-WW-0* (Wall Wash)

*Note: Can only fit 1 media if HEX or WW is selected

Emergency

EM-1000 (25W LED Remote Inverter)
EM-1002 (10W LED Remote Emergency Driver)

Spec-00256 Revised 07/13/2022

Patent: www.csllighting.com/patents

14508 Nelson Ave. City of Industry, CA 91744 • tel: 626.336.4511 • fax: 626.330.4266 • www.csllighting.com
©2021 Creative Systems Lighting, A Division of Troy-CSL Lighting, Inc. All rights reserved. Subject to change without notice.

