

# GyroShift 3" Cylinder

25W LED Pendant  
Round

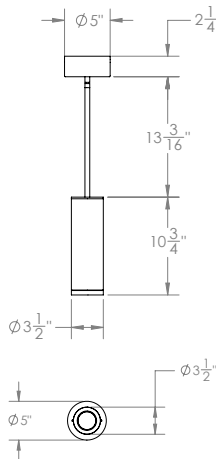
Catalog #:

Type:

Project:

Date:

Notes:



## STANDARD FINISHES

<b>ABL</b> (Aegean Blue)	<b>PNC</b> (Painted Natural Copper)
<b>BB</b> (Burnished Bronze)	<b>RD</b> (Red)
<b>BK</b> (Gloss Black)	<b>SGR</b> (Sage Green)
<b>BLU</b> (Blue)	<b>SND</b> (Sand)
<b>DVG</b> (Dove Gray)	<b>SS</b> (Satin Silver)
<b>FLG</b> (Flannel Gray)	<b>TBZ</b> (Textured Bronze)
<b>GA</b> (Galvanized)	<b>TGP</b> (Textured Graphite)
<b>GWT</b> (Gloss White)	<b>TNG</b> (Tangerine)
<b>LG</b> (Lime Green)	<b>TTL</b> (Tahitian Teal)
<b>MB</b> (Matte Black)	<b>WT</b> (Semi Gloss White)
<b>MBL</b> (Midnight Blue)	<b>YEL</b> (Yellow)
<b>PNA</b> (Painted Natural Aluminum)	

## Electrical Data

CCT	CRI	Wattage	Delivered Lumens	Efficacy
2700K	90 CRI	25W	1550 lm	62 lpw
3000K	90 CRI	25W	1640 lm	65 lpw
3500K	90 CRI	25W	1725 lm	69 lpw
4000K	90 CRI	25W	1795 lm	72 lpw
Warm Dim	-	10W	608 lm	61 lpw

Lumens will vary depending on CCT, optic & lens option

## Specifications

### Field Replaceable LED Light Engine

- 25W LED with 2 SDCM binning
- 2700K, 3000K, 3500K and 4000K at 90 CRI
- 10°, 30° and 50° and optics included
- 45° adjustability with 360° aiming

### Finishes

Available in many colors with optional coastal coating to protect finish in coastal environments

### Field Replaceable Dimming Driver

- Multiple dimming drivers available
- Power factor > 0.9, 50/60Hz

### Listing / Warranty

- Five (5) year limited warranty
- UL listed to US and Canadian standards for damp location



### Mounting

- 4" of stem included; (1) 6", (2) 12" & (1) 18" (includes couplers)
- Contact the factory for custom sloped ceiling projects
- 10' field adjustable cord available, must specify
- 5" x 2-1/4" canopy included with standard universal dim driver (7-1/8" x 2-1/4" round included with Lutron and eldoLED drivers)

## Order Matrix

GyroShift 3" Pendant Cylinder (Example: LP3-SFT-10S2710ABL-NLNL-ST-0)

Series	Wattage	Driver	CCT / CRI	Optic	Finishes	Coastal Coating Option	Media 1	Media 2	Option	Rev	Canopy
LP3-SFT (Round)	-10 (10W)	S <sup>2</sup> (ERP, Universal Dim, Triac/ELV/0-10V 10% 120-277V)	27 (2700K/90 CRI)	10 30 50	ABL BB BK BLU DVG FLG GA GWT LG MB MBL PNA PNC RD SGR SND SS TBZ TGP TNG TTL WT YEL	(blank) (No coating)	-NL (No Lens) -CL (Clear Lens) -FR (Frosted Lens) -MP (Solite Lens) -LS (Linear Spread) -HEX* (Hex Louver) -WW* (Wall Wash)	NL CL FR MP LS	-ST <sup>4</sup> 4' Stem -BC 10' Black Cord -WC 10' White Cord -LV <sup>3</sup> 10' Low Voltage Aircraft Cable	-0	(blank) (standard canopy) -CC1 <sup>5</sup> (Conduit 3-1/4" canopy) -CC2 (Conduit 3-7/8" canopy)
	-15 (15W)		30 (3000K/90 CRI)			-C (Coating)					
	-20 (20W)		35 (3500K/90 CRI)								
	-25 (25W)	40 (4000K/90 CRI)									
		WD* (1850-3000K)									
		L1 <sup>1</sup> (Lutron Hi-lume® 2-Wire 1% 120V)									
		L3 <sup>1</sup> (Lutron Hi-lume® Fade-to-Black 1% 120-277V)									
		EL1 <sup>1</sup> (eldoLED DALI 1% 120-277V)									
		EL2 <sup>1</sup> (eldoLED 0-10V 1% 120-277V)									
		DMX <sup>1</sup> (DMX 1% 120-277V)									

1. Includes larger canopy
2. Forward and reverse dimming at 120V only
3. Damp location Rated
4. Stem kit includes: (1) x 6", (2) x 12", (1) x 18"
5. CC1 and CC2 only for S driver option

## Media

<b>S3-LENS-CL-0</b> (Clear Lens)	<b>S3-LENS-LS-0</b> (Linear Spread)
<b>S3-LENS-FR-0</b> (Frosted Lens)	<b>S3-LENS-HEX-0*</b> (Hex Louver)
<b>S3-LENS-MP-0</b> (Solite Lens)	<b>S3-LENS-WW-0*</b> (Wall Wash)

\*Note: Can only fit 1 media if HEX or WW is selected

## Emergency

<b>EM-1000</b> (25W LED Remote Inverter)
<b>EM-1002</b> (10W LED Remote Emergency Driver)

Spec-00254 Revised 10/08/2021

Patent: [www.csllighting.com/patents](http://www.csllighting.com/patents)

14508 Nelson Ave. City of Industry, CA 91744 • tel: 626.336.4511 • fax: 626.330.4266 • [www.csllighting.com](http://www.csllighting.com)  
©2021 Creative Systems Lighting, A Division of Troy-CSL Lighting, Inc. All rights reserved. Subject to change without notice.

