

GyroShift 5" Flush Mount Cylinder

30W LED Surface Mount
Round

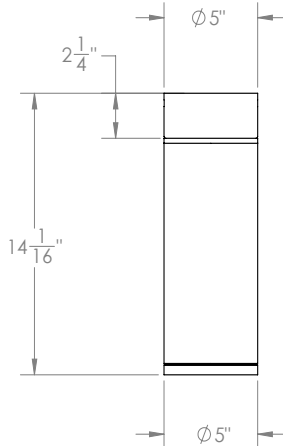
Catalog #:

Type:

Project:

Date:

Notes:



STANDARD FINISHES

ABL (Aegean Blue)	PNC (Painted Natural Copper)
BB (Burnished Bronze)	RD (Red)
BK (Gloss Black)	SGR (Sage Green)
BLU (Blue)	SND (Sand)
DVG (Dove Gray)	SS (Satin Silver)
FLG (Flannel Gray)	TBZ (Textured Bronze)
GA (Galvanized)	TGP (Textured Graphite)
GWT (Gloss White)	TNG (Tangerine)
LG (Lime Green)	TTL (Tahitian Teal)
MB (Matte Black)	WT (Semi Gloss White)
MBL (Midnight Blue)	YEL (Yellow)
PNA (Painted Natural Aluminum)	

Electrical Data

CCT	CRI	Wattage	Delivered Lumens	Efficacy
2700K	90 CRI	30W	1745 lm	58 lpw
3000K	90 CRI	30W	1850 lm	61 lpw
3500K	90 CRI	30W	1945 lm	64 lpw
4000K	90 CRI	30W	2025 lm	68 lpw
Warm Dim	-	10W	608 lm	61 lpw

Lumens will vary depending on CCT, optic & lens option

Specifications

Field Replaceable LED Light Engine

- 30W LED with 2 SDCM binning
- 2700K, 3000K, 3500K and 4000K at 90 CRI
- 10°, 30° and 50° optics included
- 45° adjustability with 360° aiming

Field Replaceable Dimming Driver

- Multiple dimming drivers available
- Power factor > 0.9, 50/60Hz

Mounting

5" x 2-1/4" round canopy included with standard universal dim driver. (7-1/8" x 2-1/4" round canopy included with Lutron and eldoLED drivers)

Finishes

Available in many colors with optional coastal coating to protect finish in coastal environments

Listing / Warranty

- Five (5) year limited warranty
- UL listed to US and Canadian standards for damp locations



Order Matrix

GyroShift 5" Flush Mount Cylinder (Example: LF5-SFT-10S2710ABL-NLNL-0)

Series	Wattage	Driver	CCT / CRI	Optic	Finishes	Coastal Coating Option	Media 1	Media 2	Rev	Canopy
LF5-SFT (Round)	-10 (10W)	S ² (ERP, Universal Dim, Triac/ELV/0-10V 10% 120-277V)	27 (2700K/90 CRI)	10	ABL	(blank) (No coating)	-NL (No Lens)	NL	-0	(blank) (standard canopy)
	-15 (15W)	L1 ¹ (Lutron Hi-lume® 2-Wire 1% 120V)	30 (3000K/90 CRI)	30	BB	-C (Coating)	-CL (Clear Lens)	CL		-CC1 ³ (Conduit 3-1/4" canopy)
	-20 (20W)		35 (3500K/90 CRI)	50	BK	-FR (Frosted Lens)	FR		-CC2 ³ (Conduit 3-7/8" canopy)	
	-25 (25W)	L3 ¹ (Lutron Hi-lume® Fade-to-Black 1% 120-277V)	40 (4000K/90 CRI)		BLU		-MP (Solite Lens)	MP		
	-30 (30W)		WD* (1850-3000K)		DVG		-LS (Linear Spread)	LS		
		EL1 ¹ (eldoLED DALI 1% 120-277V)			GA		-HEX* (Hex Louver)			
		EL2 ¹ (eldoLED 0-10V 1% 120-277V)			GWT		-WW* (Wall Wash)			
		DMX ¹ (DMX 1% 120-277V)			LG					
					MB					
					MBL					
					PNA					
					PNC					
					RD					
					SGR					
					SND					
					SS					
					TBZ					
					TGP					
					TNG					
					TTL					
					WT					
					YEL					

1. Includes larger canopy
2. Forward and reverse dimming at 120V only
3. CC1 and CC2 only for S driver option

*Note: Warm dim max wattage is 10W

*For CCT that are out of range, please consult factory

* Note: Can only fit 1 media if HEX or WW is selected

Media

S3-LENS-CL-0 (Clear Lens)	S3-LENS-LS-0 (Linear Spread)
S3-LENS-FR-0 (Frosted Lens)	S3-LENS-HEX-0* (Hex Louver)
S3-LENS-MP-0 (Solite Lens)	S3-LENS-WW-0* (Wall Wash)

*Note: Can only fit 1 media if HEX or WW is selected

Emergency

EM-1000 (25W LED Remote Inverter)
EM-1002 (10W LED Remote Emergency Driver)

Spec-00253 Revised 10/08/2021

Patent: www.csllighting.com/patents

14508 Nelson Ave. City of Industry, CA 91744 • tel: 626.336.4511 • fax: 626.330.4266 • www.csllighting.com
©2021 Creative Systems Lighting, A Division of Troy-CSL Lighting, Inc. All rights reserved. Subject to change without notice.

