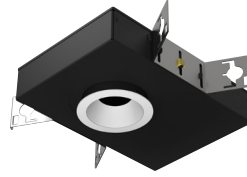


2" acrobat LED Downlight

Non-IC Shallow New Construction Housing

Round or Square / Trimmed or Trimless



| Wattage | CCT | Delivered Lumens | Efficacy |
|---------|-------|------------------|----------|
| 10W | 3000K | 795lm | 79lpw |
| 15W | 3000K | 1184lm | 79lpw |
| 20W | 3000K | 1406lm | 70lpw |

Lumens will vary depending on CCT & optic

Description

Acrobat downlight delivers over 1400lm through a 2" aperture with four optical distributions. Delivered lumens are maintained in different ceiling thicknesses.

Field Replaceable LED Light Engine

- 10W, 15W or 20W LED with 2 SDCM binning
- 2700K, 3000K, 3500K or 4000K at 90 CRI
- Field replaceable optics available in spot, narrow flood, flood or wide flood
- 50,000 hours at 70% lumen maintenance (L70)

Field Replaceable Dimming Driver

- Power factor > 0.9, 50/60Hz
- Multiple dimming drivers available
- Complies with IEEE62.41 surge protection

Housing

Non-IC rated housing must be kept a minimum of 3" from insulation. 18 gauge galvanized steel housing and junction box with 1/2" trade size knockouts.

Includes universal butterfly brackets to accommodate C-Channel, adjustable bar hangers, and EMT. C-Channel is recommended for T-bar ceilings and must be ordered separately. Adjustable wood joist bar hangers are included. Max. ambient temperature: 104°F (40°C)

Ceiling Thickness

- Accommodates ceiling thickness from 1/2" to 1-1/4" (Extended 2" collar available, must specify)
- Delivered lumens are maintained through entire range

Trim Style

- Round spun aluminum trim with anodized finishes, consult factory for custom finishes
- Square die-cast aluminum trim with powder coat finishes, consult factory for custom finishes
- Trimless mud plate and wood ceiling option available

Accessories

Accommodates (2) accessories, a media holder is required. Accessories are not compatible when used with lensed trim.

Emergency

Remote inverter operates for 90 minutes with remote test switch available, requires above ceiling access.

Listing/Warranty

- Patent pending
- Five (5) year limited warranty
- UL listed to US and Canadian standards for damp locations
- UL listed to US and Canadian standards for wet locations when used with lens



Housing Order Matrix (Example: A2-NCSP15S2730-R00)

| Installation Type | Wattage | Driver | CCT / CRI | Optic | Aperture | Trim Style | Rev | Extended Collar |
|----------------------------|-----------------|--|----------------------------|--------------------------|---|---|-----------|---|
| A2-NCSP (Non-IC) | 10 (10W) | S' (ERP, Universal Dim, Triac/ELV/0-10V 10% 120-277V) | 27 (2700K / 90 CRI) | 10 (Spot) | -R (Round) -S (Square) | (blank) (Flanged) TL (Trimless) WC (Wood Ceiling) | 00 | (blank) (Standard 1-1/4") -2 (Up to 2") |
| | 15 (15W) | | 30 (3000K / 90 CRI) | 30 (Narrow Flood) | | | | |
| | 20 (20W) | LR1 SR1 (Remote ERP, Universal Dim, Triac/ELV/0-10V 10% 120-277V) | 35 (3500K / 90 CRI) | 50 (Flood) | | | | |
| | | | 40 (4000K / 90 CRI) | 80 (Wide Flood) | | | | |

1. Forward and reverse phase dimming at 120V only

Trim Order Matrix (Example: A2-1RWH-WH-NL-00)

| Trim | Aperture | Reflector Finish | Flange Finish | Lens Type | Rev |
|-------------|---------------------------------------|-------------------------------------|-----------------------------------|--------------------------------------|------------|
| A2-1 | R (Round) S (Square) | WH (White) | (blank) (Trimless / Wood Ceiling) | -NL (No Lens - damp location) | -00 |
| | | CA³ (Clear Alzak) | -WH (White) | -FR (Frosted - wet location) | |
| | | BL (Black) | -BL (Black) | -MP (Solite - wet location) | |
| | | SA (Satin Aluminum) | -SA (Satin Aluminum) | -CL (Clear - wet location) | |
| | | BZ (Bronze) | -BZ (Bronze) | | |

3. Available in round aperture only

Accessories (Note: Media holder required)

A2-MHLDR (Media Holder- required)
A2-HEX (Hex Louver)
A2-FR (Frosted Lens)
A2-MP (Solite Lens)
A2-CL (Clear Lens)
A2-LS (Linear Spread Lens)

C-Channel Bar Hangers

LCB-27 (27" C-Channel)
LCB-52 (52" C-Channel)

Optics

A2-10-OPTIC (10° Spot)
A2-30-OPTIC (30° Narrow Flood)
A2-50-OPTIC (50° Flood)
A2-80-OPTIC (80° Wide Flood)

Emergency

EM-1000 (25W LED Remote Inverter)
EM-1002 (10W LED Remote Emergency Driver)
EM-1003 (35W LED Remote Inverter)
EM-1004 (50W LED Remote Inverter)

2" acrobat LED Downlight
Non-IC Shallow New Construction
 Round or Square / Trimmed or Trimless

Catalog #:

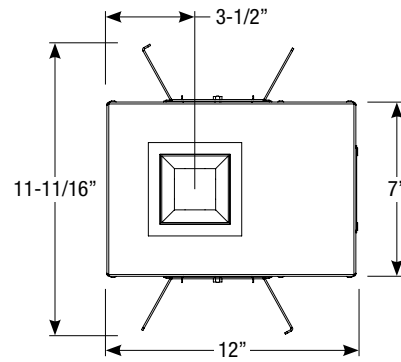
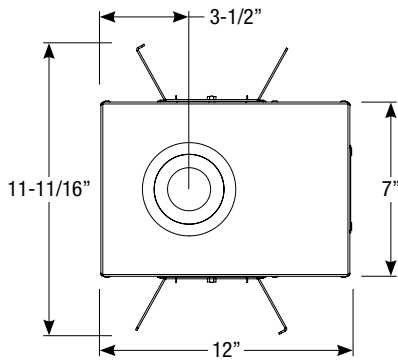
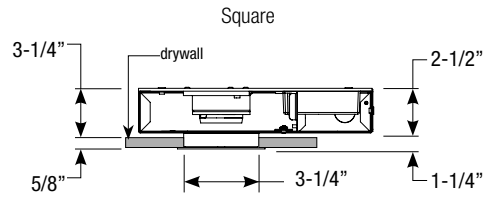
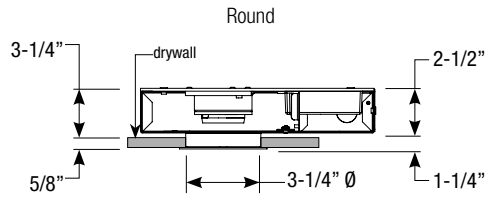
Type:

Project:

Date:

Notes:

Housing Dimensions



Ceiling Cut-out: 3-3/8" Ø

Ceiling Cut-out: 3-3/8" x 3-3/8"

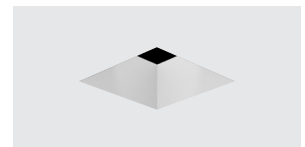
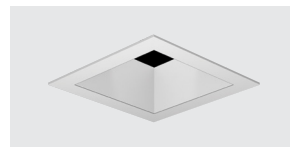
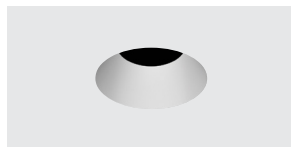
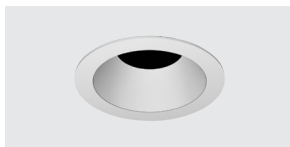
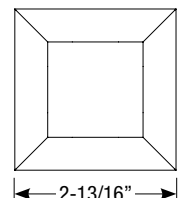
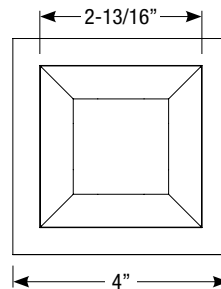
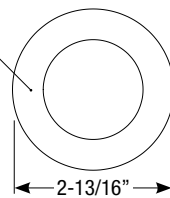
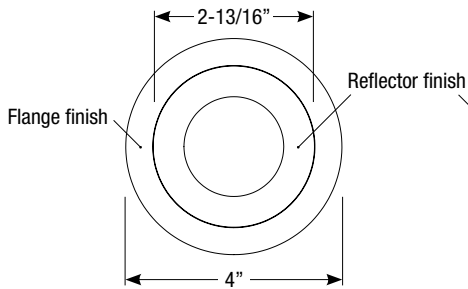
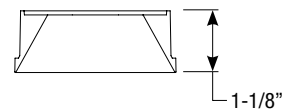
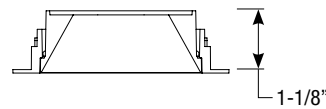
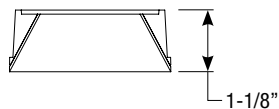
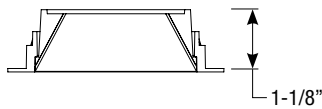
Trim Dimensions

Round Trimmed

Round Trimless

Square Trimmed

Square Trimless



Revised 10/22/18