

CSL | CYLINDERS



2", 3", 5" Architectural LED Cylinders

Seamless Design, Strong Performance

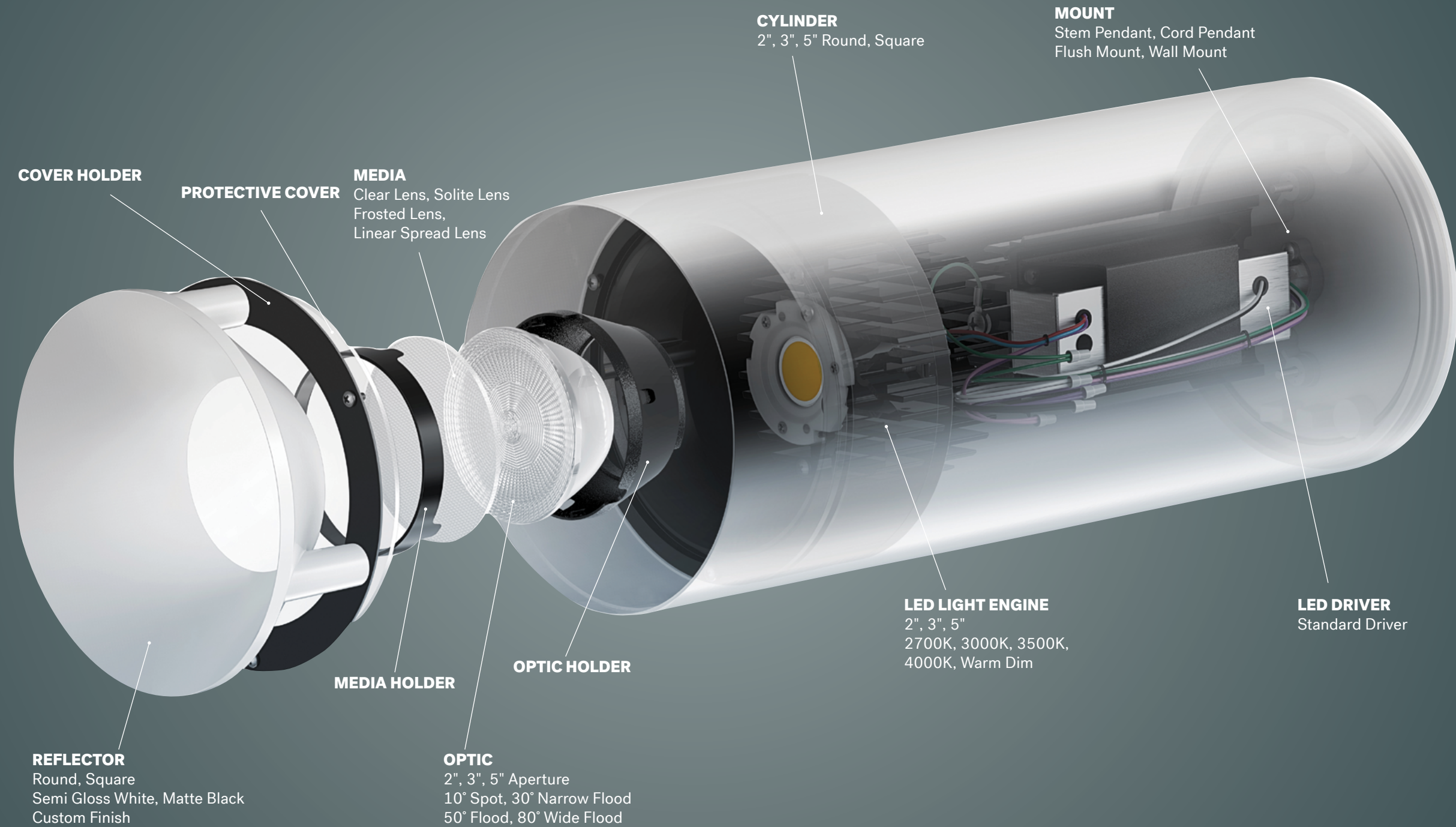



CSL Cylinders are powerful downlights you can wall mount, surface mount, suspend with stem or cord. Versatile in nature, CSL Cylinders are available in three sizes, two shapes and two classic finishes—semi-gloss white and matte black. Driven by minimalist design, these LED Cylinders feature a clean silhouette with seamless edges.

With design at the forefront, CSL Cylinders boast streamlined features like no seams, a low-profile canopy and no external hardware. The minimalist design elevates existing architecture for a beautiful, clean aesthetic.

Built with form and function, CSL Cylinders feature a removable bezel for easy access to the optics, LED, and driver. With real time availability, standard options are always available and ready to ship.

With nearly double the lumen output of previous versions, this latest class of cylinders delivers quality optics and high-performance for any residential or commercial setting.





Good design embraces restraint. For spaces with complex architectural features or finishes, CSL Cylinders can offer a visual reprieve. Other times, minimalism is a core component of the overall design, creating the perfect backdrop for multiple ceiling mounts or hanging cylinders.

From Residential and Commercial to Hospitality and Retail, CSL architectural cylinders offer high lumen output that fills the space with beautiful low glare light from the patented Silent Vu™ optic system.



The wall mounted collection delivers clean, modern design to the outdoors. With soft yet substantial light from the Silent Vu™ optic system, CSL Cylinders lend directional light to enhance the outdoor experience.

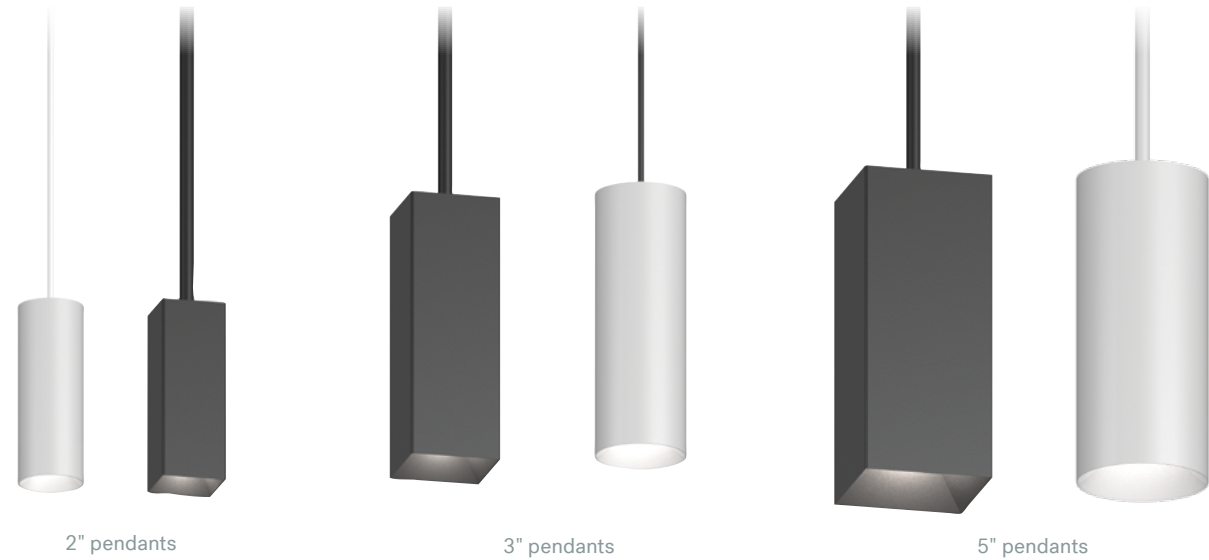
Wet-rated to withstand the elements, the cylinders are also equipped with an IP65 Rating and 3G Vibration Rating to withstand vibration from the roadside and nearby bridges.



CSL Entity features a lower profile, creating a bold effect. Slim and streamlined, the compact design draws the eye upward while keeping the focus on the overall space.

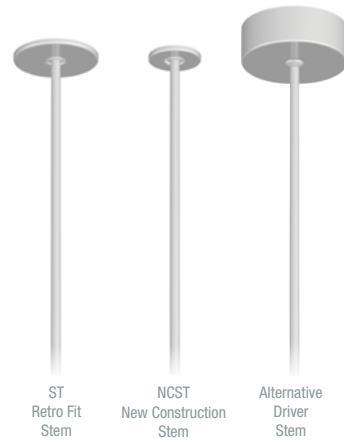
Suspended or ceiling mounted, Entity integrates CSL's low glare Silent Vu™ optics into slim silhouettes providing a range of mounting options and endless style.

2", 3", 5" PENDANTS

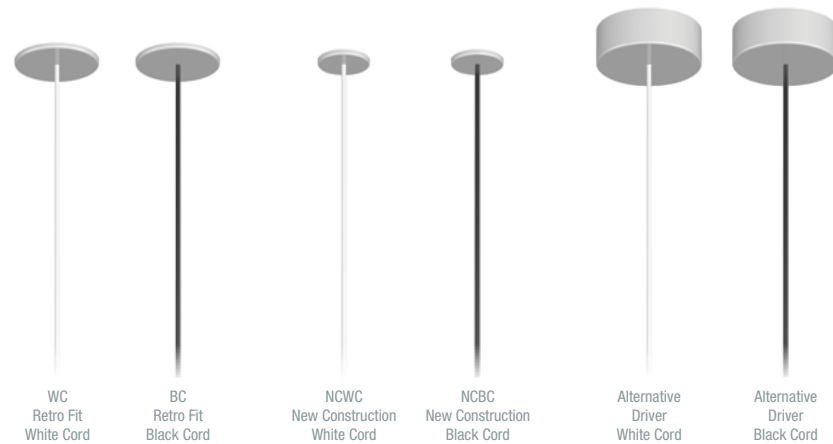


HANGING OPTIONS

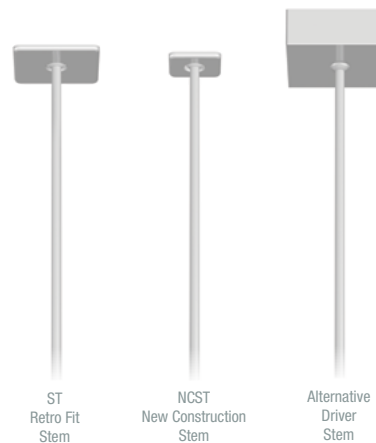
Round Stem Mount



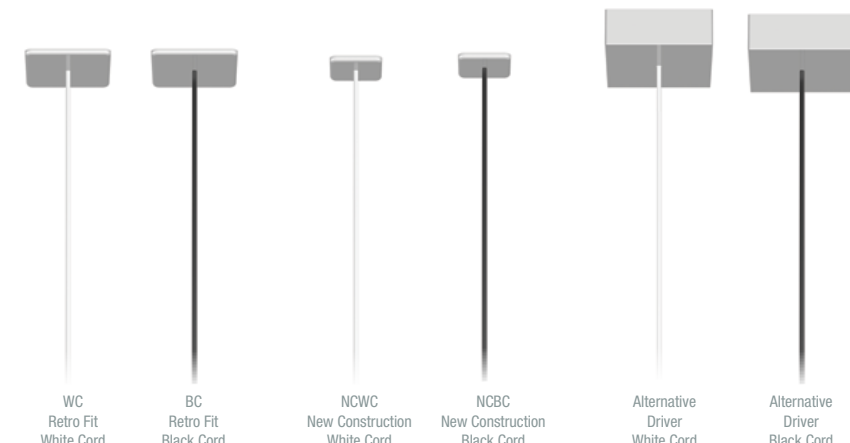
Round Cord Mount



Square Stem Mount



Square Cord Mount



2" PENDANT ORDER MATRIX

2" CYLINDER LED PENDANT (EXAMPLE: LP2-10-27-30-CL-CL-WT-C-5-S-ST)

SHAPE	WATTAGE	CCT/CRI	OPTIC	MEDIA 1	MEDIA 2
LP2 Pendant Downlight 2" Round	-10 (10W)	-27 (2700K 90CRI)	-10 (10° Spot)	(blank) (None)	(blank) (None)
	-15 (15W)	-30 (3000K 90CRI)	-30 (30° Narrow Flood)	CL (Clear Lens)	CL (Clear Lens)
	-20 (20W)	-35 (3500K 90CRI)	-50 (50° Flood)	MP (Solite Lens)	MP (Solite Lens)
SLP2 Pendant Downlight 2" Square		-40 (4000K 80CRI)	-80* (80° Wide Flood)	FR (Frosted Lens)	FR (Frosted Lens)
		-WD* (Warm Dim 98CRI)	*WD with 80 degree optic not CA title 24 compliant.	LS (Linear Spread Lens)	LS (Linear Spread Lens)
		* Media 1 lens required. For WD with 10°, 30°, 50° Optic use MP (Solite Lens). For WD with 80° Optic use FR (Frosted Lens).		HEX (Hex Louver)	Hold 1 Media only when HEX selected
STANDARD FINISH	COASTAL COATING	REVISION	DRIVER		
-WT (Semi Gloss White)	(blank) (None)	-5 (Revision)	-S (Universal Dim Driver: 1%-100% 0-10V, TRIAC, ELV, 120V/277V)		
-MB (Matte Black)	-C (Coastal Coating)		ALTERNATIVE DRIVER		
			-L3 (Lutron Dim Driver: 1%-100% EcoSystem, 120V/277V)		
			-EL1 (EldoLED DALI Dim: 1%-100% DALI, 120V/277V)		
			-EL2 (EldoLED Dim: 0.1%-100% 0-10V, 120V/277V)		
			-DMX (DMX Dim: 1%-100% DMX, 120V/277V)		
NOTE: Ambient temperature rated for 25°C					

HANGING OPTIONS

- ST** (Stem - Retro Fit)
- NCST** (Stem - New Construction)
- BC** (10' Black Cord - Retro Fit)
- WC** (10' White Cord - Retro Fit)
- NCBC** (10' Black Cord - New Construction)
- NCWC** (10' White Cord - New Construction)

ACCESSORIES (2" CYLINDER)

OPTIC
C2-10-OPTIC (10° Spot)
C2-30-OPTIC (30° Narrow Flood)
C2-50-OPTIC (50° Flood)
C2-80-OPTIC (80° Wide Flood)

MEDIA

C2-CL (Clear Lens)
C2-MP (Solite Lens)
C2-FR (Frosted Lens)
C2-LS (Linear Spread Lens)
C2-HEX (Hex Louver)

EMERGENCY

DRIVER	
EM-1000	(25W Remote Inverter)
EM-1002	(10W Remote Inverter)
EM-1003	(35W Remote Inverter)
EM-1003-CA	(35W Remote Inverter) Title 20
EM-1004	(50W Remote Inverter)
EM-1006	(25W Remote Inverter) Title 20

3" PENDANT ORDER MATRIX

3" CYLINDER LED PENDANT (EXAMPLE: LP3-25-35-50-CL-MB-C-6-S-ST)

SHAPE	WATTAGE	CCT/CRI	OPTIC	MEDIA 1	MEDIA 2
LP3 Pendant Downlight 3" Round	-15 (15W) -20 (20W) -25 (25W)	-27 (2700K 90CRI) -30 (3000K 90CRI) -35 (3500K 90CRI)	-10 (10° Spot) -30 (30° Narrow Flood) -50 (50° Flood)	(blank) (None) CL (Clear Lens) MP (Solite Lens)	(blank) (None) CL (Clear Lens) MP (Solite Lens)
SLP3 Pendant Downlight 3" Square	-30 (30W)	-40 (4000K 80CRI) -WD* (Warm Dim 98CRI)	-80* (80° Wide Flood) <small>*WD with 80 degree optic not CA title 24 compliant.</small>	FR (Frosted Lens) LS (Linear Spread Lens)	FR (Frosted Lens) LS (Linear Spread Lens)
		<small>* Media 1 lens required. For WD with 10°, 30°, 50° Optic use MP (Solite Lens). For WD with 80° Optic use FR (Frosted Lens).</small>		HEX (Hex Louver)	Holds 1 Media only when HEX selected
STANDARD FINISH	COASTAL COATING	REVISION	DRIVER		
-WT (Semi Gloss White)	(blank) (None)	-6 (Revision)	-S (Universal Dim Driver: 1%-100% 0-10V, TRIAC, ELV, 120V/277V)		
-MB (Matte Black)	-C (Coastal Coating)		ALTERNATIVE DRIVER		
			-L3 (Lutron Dim Driver: 1%-100% EcoSystem, 120V/277V)		
			-EL1 (EldoLED DALI Dim: 1%-100% DALI, 120V/277V)		
			-EL2 (EldoLED Dim: 0.1%-100% 0-10V, 120V/277V)		
			-DMX (DMX Dim: 1%-100% DMX, 120V/277V)		
			NOTE: Ambient temperature rated for 25°C		
HANGING OPTIONS					
-ST (Stem - Retro Fit)					
-NCST (Stem - New Construction)					
-BC (10' Black Cord - Retro Fit)					
-WC (10' White Cord - Retro Fit)					
-NCBC (10' Black Cord - New Construction)					
-NCWC (10' White Cord - New Construction)					

ACCESSORIES (3" CYLINDER)

OPTIC
C3-10-OPTIC (10° Spot)
C3-30-OPTIC (30° Narrow Flood)
C3-50-OPTIC (50° Flood)
C3-80-OPTIC (80° Wide Flood)

MEDIA
C3-CL (Clear Lens)
C3-MP (Solite Lens)
C3-FR (Frosted Lens)
C3-LS (Linear Spread Lens)
C3-HEX (Hex Louver)

EMERGENCY

DRIVER
EM-1000 (25W Remote Inverter)
EM-1002 (10W Remote Inverter)
EM-1003 (35W Remote Inverter)
EM-1003-CA (35W Remote Inverter) Title 20
EM-1004 (50W Remote Inverter)
EM-1006 (25W Remote Inverter) Title 20

5" PENDANT ORDER MATRIX

5" CYLINDER LED PENDANT (EXAMPLE: LP5-50-WD-80-MP-FR-WT-C-3-S-ST)

SHAPE	WATTAGE	CCT/CRI	OPTIC	MEDIA 1	MEDIA 2
LP5 Pendant Downlight 5" Round	-15 (15W) -20 (20W) -25 (25W)	-27 (2700K 90CRI) -30 (3000K 90CRI) -35 (3500K 90CRI)	-10 (10° Spot) -30 (30° Narrow Flood) -50 (50° Flood)	(blank) (None) CL (Clear Lens) MP (Solite Lens)	(blank) (None) CL (Clear Lens) MP (Solite Lens)
SLP5 Pendant Downlight 5" Square	-30 (30W) -35 (35W) -40 (40W) -50 (50W)	-40 (4000K 80CRI) -WD* (Warm Dim 98CRI)	-80* (80° Wide Flood) <small>*WD with 80 degree optic not CA title 24 compliant.</small>	FR (Frosted Lens) LS (Linear Spread Lens)	FR (Frosted Lens) LS (Linear Spread Lens)
		<small>* Media 1 lens required. For WD with 10°, 30°, 50° Optic use MP (Solite Lens). For WD with 80° Optic use FR (Frosted Lens). Warm Dim available up to 30W.</small>		HEX (Hex Louver)	Holds 1 Media only when HEX selected
STANDARD FINISH	COASTAL COATING	REVISION	DRIVER		
-WT (Semi Gloss White)	(blank) (None)	-3 (Revision)	-S (Universal Dim Driver: 1%-100% 0-10V, TRIAC, ELV, 120V/277V)		
-MB (Matte Black)	-C (Coastal Coating)		ALTERNATIVE DRIVER		
			-L3 (Lutron Dim Driver: 1%-100% EcoSystem, 120V/277V)		
			-EL1 (EldoLED DALI Dim: 1%-100% DALI, 120V/277V)		
			-EL2 (EldoLED Dim: 0.1%-100% 0-10V, 120V/277V)		
			-DMX (DMX Dim: 1%-100% DMX, 120V/277V)		
			NOTE: Ambient temperature rated for 25°C, 50W option not available.		
HANGING OPTIONS					
-ST (Stem - Retro Fit)					
-NCST (Stem - New Construction)					
-BC (10' Black Cord - Retro Fit)					
-WC (10' White Cord - Retro Fit)					
-NCBC (10' Black Cord - New Construction)					
-NCWC (10' White Cord - New Construction)					

ACCESSORIES (5" CYLINDER)

OPTIC
C5-10-OPTIC (10° Spot)
C5-30-OPTIC (30° Narrow Flood)
C5-50-OPTIC (50° Flood)
C5-80-OPTIC (80° Wide Flood)

MEDIA
C5-CL (Clear Lens)
C5-MP (Solite Lens)
C5-FR (Frosted Lens)
C5-LS (Linear Spread Lens)
C5-HEX (Hex Louver)

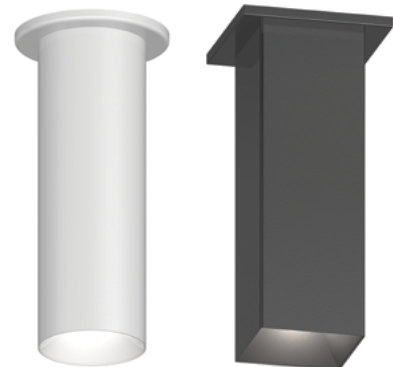
EMERGENCY

DRIVER
EM-1000 (25W Remote Inverter)
EM-1002 (10W Remote Inverter)
EM-1003 (35W Remote Inverter)
EM-1003-CA (35W Remote Inverter) Title 20
EM-1004 (50W Remote Inverter)
EM-1006 (25W Remote Inverter) Title 20

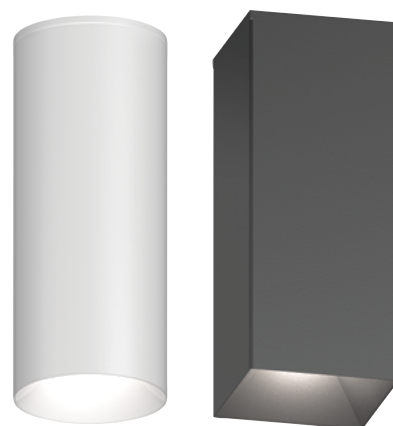
2", 3", 5" FLUSH MOUNT



2" flush mount shown with Standard Canopy

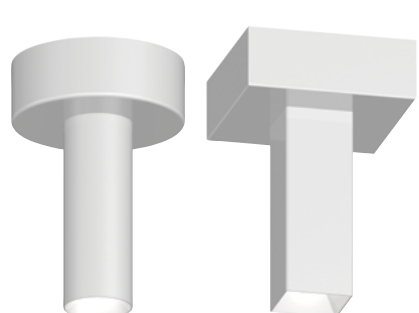


3" flush mount shown with Standard Canopy

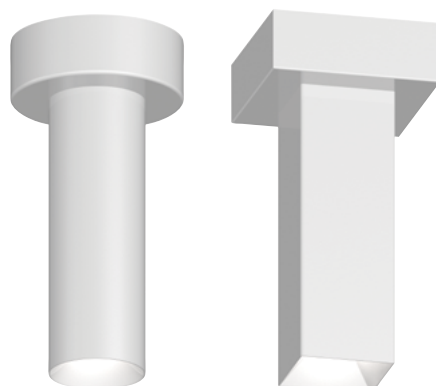


5" flush mount shown with Standard Canopy

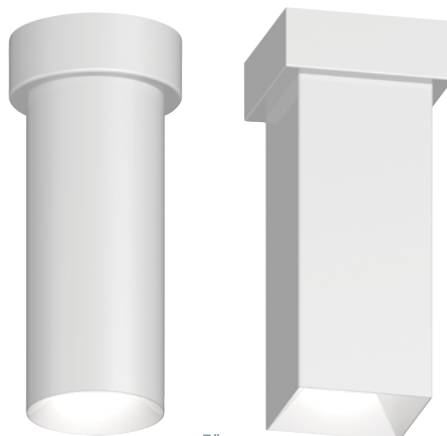
ALTERNATIVE DRIVER CANOPY



2"



3"



5"

2" FLUSH MOUNT ORDER MATRIX

2" CYLINDER LED FLUSH MOUNT (EXAMPLE: LF2-10-27-30-CL-CL-WT-C-5-S)

SHAPE	WATTAGE	CCT/CRI	OPTIC	MEDIA 1	MEDIA 2
LF2 Flush Downlight 2" Round	-10 (10W)	-27 (2700K 90CRI)	-10 (10° Spot)	(blank) (None)	(blank) (None)
	-15 (15W)	-30 (3000K 90CRI)	-30 (30° Narrow Flood)	CL (Clear Lens)	CL (Clear Lens)
	-20 (20W)	-35 (3500K 90CRI)	-50 (50° Flood)	MP (Solite Lens)	MP (Solite Lens)
SLF2 Flush Downlight 2" Square		-40 (4000K 80CRI)	-80* (80° Wide Flood)	FR (Frosted Lens)	FR (Frosted Lens)
		-WD* (Warm Dim 98CRI)	*WD with 80 degree optic not CA title 24 compliant.	LS (Linear Spread Lens)	LS (Linear Spread Lens)
				HEX (Hex Louver)	Holds 1 Media only when HEX selected
STANDARD FINISH	COASTAL COATING	REVISION	DRIVER		
-WT (Semi Gloss White)	(blank) (None)	-5 (Revision)	-S (Universal Dim Driver: 1%-100% 0-10V, TRIAC, ELV, 120V/277V)		
-MB (Matte Black)	-C (Coastal Coating)		ALTERNATIVE DRIVER		
			-L3 (Lutron Dim Driver: 1%-100% EcoSystem, 120V/277V)		
			-EL1 (EldoLED DALI Dim: 1%-100% DALI, 120V/277V)		
			-EL2 (EldoLED Dim: 0.1%-100% 0-10V, 120V/277V)		
			-DMX (DMX Dim: 1%-100% DMX, 120V/277V)		
NOTE: Ambient temperature rated for 25°C					

ACCESSORIES (2" CYLINDER)

OPTIC	
C2-10-OPTIC	(10° Spot)
C2-30-OPTIC	(30° Narrow Flood)
C2-50-OPTIC	(50° Flood)
C2-80-OPTIC	(80° Wide Flood)

MEDIA	
C2-CL	(Clear Lens)
C2-MP	(Solite Lens)
C2-FR	(Frosted Lens)
C2-LS	(Linear Spread Lens)
C2-HEX	(Hex Louver)

EMERGENCY

DRIVER	
EM-1000	(25W Remote Inverter)
EM-1002	(10W Remote Inverter)
EM-1003	(35W Remote Inverter)
EM-1003-CA	(35W Remote Inverter) Title 20
EM-1004	(50W Remote Inverter)
EM-1006	(25W Remote Inverter) Title 20

3" FLUSH MOUNT ORDER MATRIX

3" CYLINDER LED FLUSH MOUNT (EXAMPLE: LF3-10-27-30-CL-CL-WT-C-5-S)

SHAPE	WATTAGE	CCT/CRI	OPTIC	MEDIA 1	MEDIA 2
LF3 Flush Downlight 3" Round	-15 (15W)	-27 (2700K 90CRI)	-10 (10° Spot)	(blank) (None)	(blank) (None)
	-20 (20W)	-30 (3000K 90CRI)	-30 (30° Narrow Flood)	CL (Clear Lens)	CL (Clear Lens)
	-25 (25W)	-35 (3500K 90CRI)	-50 (50° Flood)	MP (Solite Lens)	MP (Solite Lens)
SLF3 Flush Downlight 3" Square	-30 (30W)	-40 (4000K 80CRI)	-80* (80° Wide Flood)	FR (Frosted Lens)	FR (Frosted Lens)
		-WD* (Warm Dim 98CRI)	*WD with 80 degree optic not CA title 24 compliant.	LS (Linear Spread Lens)	LS (Linear Spread Lens)
				HEX (Hex Louver)	Holds 1 Media only when HEX selected
STANDARD FINISH		COASTAL COATING	REVISION	DRIVER	
-WT (Semi Gloss White)	(blank) (None)	-6 (Revision)	-S (Universal Dim Driver: 1%-100% 0-10V, TRIAC, ELV, 120V/277V)		
-MB (Matte Black)	-C (Coastal Coating)		ALTERNATIVE DRIVER		
			-L3 (Lutron Dim Driver: 1%-100% EcoSystem, 120V/277V)		
			-EL1 (EldoLED DALI Dim: 1%-100% DALI, 120V/277V)		
			-EL2 (EldoLED Dim: 0.1%-100% 0-10V, 120V/277V)		
			-DMX (DMX Dim: 1%-100% DMX, 120V/277V)		
NOTE: Ambient temperature rated for 25°C					

5" FLUSH MOUNT ORDER MATRIX

5" CYLINDER LED FLUSH MOUNT (EXAMPLE: LF5-10-27-30-CL-CL-WT-C-5-S)

SHAPE	WATTAGE	CCT/CRI	OPTIC	MEDIA 1	MEDIA 2
LF5 Flush Downlight 5" Round	-15 (15W)	-27 (2700K 90CRI)	-10 (10° Spot)	(blank) (None)	(blank) (None)
	-20 (20W)	-30 (3000K 90CRI)	-30 (30° Narrow Flood)	CL (Clear Lens)	CL (Clear Lens)
	-25 (25W)	-35 (3500K 90CRI)	-50 (50° Flood)	MP (Solite Lens)	MP (Solite Lens)
SLF5 Flush Downlight 5" Square	-30 (30W)	-40 (4000K 80CRI)	-80* (80° Wide Flood)	FR (Frosted Lens)	FR (Frosted Lens)
	-35 (35W)	-WD* (Warm Dim 98CRI)	*WD with 80 degree optic not CA title 24 compliant.	LS (Linear Spread Lens)	LS (Linear Spread Lens)
	-40 (40W)			HEX (Hex Louver)	Holds 1 Media only when HEX selected
-50 (50W)					
STANDARD FINISH		COASTAL COATING	REVISION	DRIVER	
-WT (Semi Gloss White)	(blank) (None)	-3 (Revision)	-S (Universal Dim Driver: 1%-100% 0-10V, TRIAC, ELV, 120V/277V)		
-MB (Matte Black)	-C (Coastal Coating)		ALTERNATIVE DRIVER		
			-L3 (Lutron Dim Driver: 1%-100% EcoSystem, 120V/277V)		
			-EL1 (EldoLED DALI Dim: 1%-100% DALI, 120V/277V)		
			-EL2 (EldoLED Dim: 0.1%-100% 0-10V, 120V/277V)		
			-DMX (DMX Dim: 1%-100% DMX, 120V/277V)		
NOTE: Ambient temperature rated for 25°C, 50W option not available.					

ACCESSORIES (3" CYLINDER)

OPTIC
C3-10-OPTIC (10° Spot)
C3-30-OPTIC (30° Narrow Flood)
C3-50-OPTIC (50° Flood)
C3-80-OPTIC (80° Wide Flood)

MEDIA
C3-CL (Clear Lens)
C3-MP (Solite Lens)
C3-FR (Frosted Lens)
C3-LS (Linear Spread Lens)
C3-HEX (Hex Louver)

EMERGENCY

DRIVER
EM-1000 (25W Remote Inverter)
EM-1002 (10W Remote Inverter)
EM-1003 (35W Remote Inverter)
EM-1003-CA (35W Remote Inverter) Title 20
EM-1004 (50W Remote Inverter)
EM-1006 (25W Remote Inverter) Title 20

ACCESSORIES (5" CYLINDER)

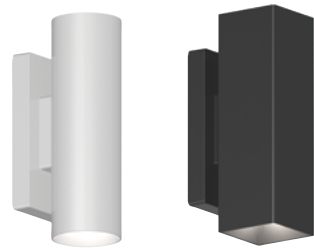
OPTIC
C5-10-OPTIC (10° Spot)
C5-30-OPTIC (30° Narrow Flood)
C5-50-OPTIC (50° Flood)
C5-80-OPTIC (80° Wide Flood)

MEDIA
C5-CL (Clear Lens)
C5-MP (Solite Lens)
C5-FR (Frosted Lens)
C5-LS (Linear Spread Lens)
C5-HEX (Hex Louver)

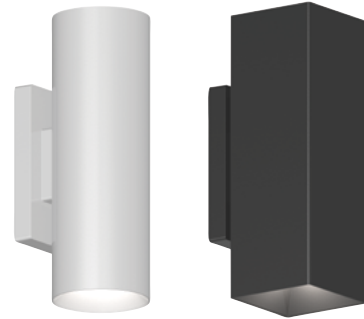
EMERGENCY

DRIVER
EM-1000 (25W Remote Inverter)
EM-1002 (10W Remote Inverter)
EM-1003 (35W Remote Inverter)
EM-1003-CA (35W Remote Inverter) Title 20
EM-1004 (50W Remote Inverter)
EM-1006 (25W Remote Inverter) Title 20

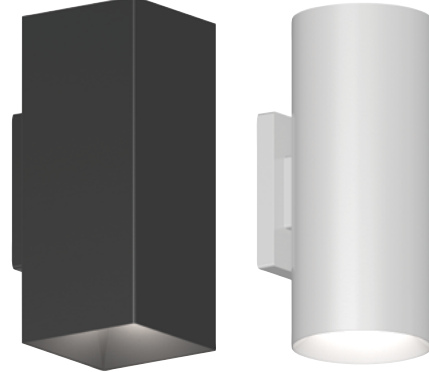
2", 3", 5" WALL MOUNT



2" wall mount shown with Standard Backplate

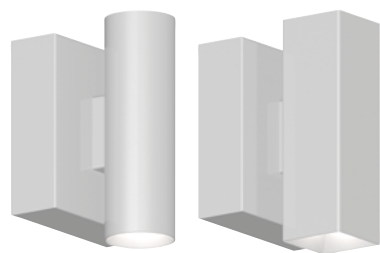


3" wall mount shown with Standard Backplate

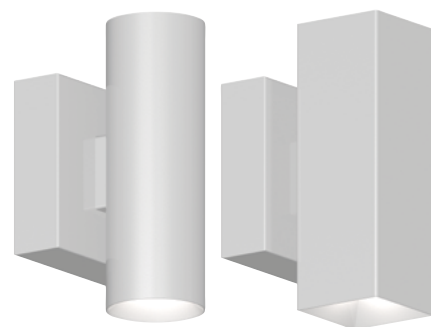


5" wall mount shown with Standard Backplate

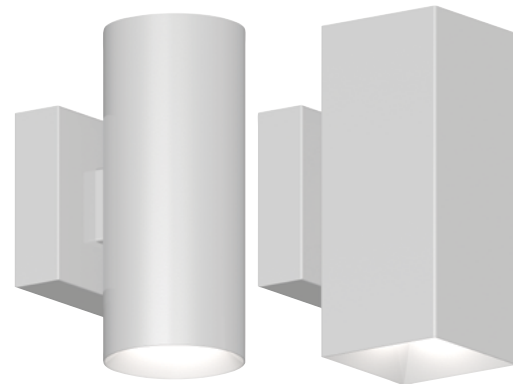
ALTERNATIVE DRIVER BACKPLATE



2"



3"



5"

2" WALL MOUNT ORDER MATRIX

2" CYLINDER LED DOWNLIGHT WALL MOUNT (EXAMPLE: LWD2-10-27-30-CL-CL-WT-C-5-S)

SHAPE	WATTAGE	CCT/CRI	OPTIC	MEDIA 1	MEDIA 2
LWD2 Wall Downlight 2" Round	-10 (10W)	-27 (2700K 90CRI)	-10 (10° Spot)	(blank) (None)	(blank) (None)
	-15 (15W)	-30 (3000K 90CRI)	-30 (30° Narrow Flood)	CL (Clear Lens)	CL (Clear Lens)
	-20 (20W)	-35 (3500K 90CRI)	-50 (50° Flood)	MP (Solite Lens)	MP (Solite Lens)
SLWD2 Wall Downlight 2" Square		-40 (4000K 80CRI)	-80* (80° Wide Flood)	FR (Frosted Lens)	FR (Frosted Lens)
		-WD* (Warm Dim 98CRI)		LS (Linear Spread Lens)	LS (Linear Spread Lens)
		* Media 1 lens required. For WD with 10°, 30°, 50° Optic use MP (Solite Lens). For WD with 80° Optic use FR (Frosted Lens).		HEX (Hex Louver)	Holds 1 Media only when HEX selected
STANDARD FINISH	COASTAL COATING	REVISION	DRIVER		
-WT (Semi Gloss White)	(blank) (None)	-5 (Revision)	-S (Universal Dim Driver: 1%-100% 0-10V, TRIAC, ELV, 120V/277V)		
-MB (Matte Black)	-C (Coastal Coating)		ALTERNATIVE DRIVER		
			-L3 (Lutron Dim Driver: 1%-100% EcoSystem, 120V/277V)		
			-EL1 (EldoLED DALI Dim: 1%-100% DALI, 120V/277V)		
			-EL2 (EldoLED Dim: 0.1%-100% 0-10V, 120V/277V)		
			-DMX (DMX Dim: 1%-100% DMX, 120V/277V)		
NOTE: Ambient temperature rated for 25°C					

2" CYLINDER LED UP & DOWNLIGHT WALL MOUNT (EXAMPLE: LWU2-10-27-30-10-27-30-CL-CL-WT-5-S)

SHAPE	WATTAGE	CCT/CRI	↑ UP-OPTIC	↑ UP-MEDIA 1	↑ UP-MEDIA 2	
LWU2 Wall Up & Downlight 2" Round	-10 (10W)	-27 (2700K 90CRI)	-10 (10° Spot)	(blank) (None)	(blank) (None)	
	-15 (15W)	-30 (3000K 90CRI)	-30 (30° Narrow Flood)	CL (Clear Lens)	CL (Clear Lens)	
	-20 (20W)	-35 (3500K 90CRI)	-50 (50° Flood)	MP (Solite Lens)	MP (Solite Lens)	
SLWU2 Wall Up & Downlight 2" Square		-40 (4000K 80CRI)	-80* (80° Wide Flood)	FR (Frosted Lens)	FR (Frosted Lens)	
		-WD* (Warm Dim 98CRI)		LS (Linear Spread Lens)	LS (Linear Spread Lens)	
		* Media 1 lens required. For WD with 10°, 30°, 50° Optic use MP (Solite Lens). For WD with 80° Optic use FR (Frosted Lens).		HEX (Hex Louver)	Holds 1 Media only when HEX selected	
↓ DOWN-OPTIC	↓ DOWN-MEDIA 1	↓ DOWN-MEDIA 2	STANDARD FINISH	COASTAL COATING	REVISION	DRIVER
-10 (10°)	(blank) (None)	(blank) (None)	-WT (Semi Gloss White)	(blank) (None)	-5 (Revision)	-S (Universal Dim Driver: 1%-100% 0-10V, TRIAC, ELV, 120V/277V)
-30 (30°)	CL (Clear Lens)	CL (Clear Lens)	-MB (Matte Black)	-C (Coastal Coating)		ALTERNATIVE DRIVER
-50 (50°)	MP (Solite Lens)	MP (Solite Lens)				-L3 (Lutron Dim Driver: 1%-100% EcoSystem, 120V/277V)
-80 (80°)	FR (Frosted Lens)	FR (Frosted Lens)				-EL1 (EldoLED DALI Dim: 1%-100% DALI, 120V/277V)
	LS (Linear Spread Lens)	LS (Linear Spread Lens)				-EL2 (EldoLED Dim: 0.1%-100% 0-10V, 120V/277V)
	HEX (Hex Louver)	Holds 1 Media only when HEX selected				-DMX (DMX Dim: 1%-100% DMX, 120V/277V)
NOTE: Ambient temperature rated for 25°C						

ACCESSORIES (2" CYLINDER)

OPTIC	MEDIA
C2-10-OPTIC (10° Spot)	C2-CL (Clear Lens)
C2-30-OPTIC (30° Narrow Flood)	C2-MP (Solite Lens)
C2-50-OPTIC (50° Flood)	C2-FR (Frosted Lens)
C2-80-OPTIC (80° Wide Flood)	C2-LS (Linear Spread Lens)
	C2-HEX (Hex Louver)

EMERGENCY

DRIVER	
EM-1000 (25W Remote Inverter)	EM-1003-CA (35W Remote Inverter) Title 20
EM-1002 (10W Remote Inverter)	EM-1004 (50W Remote Inverter)
EM-1003 (35W Remote Inverter)	EM-1006 (25W Remote Inverter) Title 20

3" WALL MOUNT ORDER MATRIX

3" CYLINDER LED DOWNLIGHT WALL MOUNT (EXAMPLE: LWD3-25-35-50-CL-MB-C-6-S)

SHAPE	WATTAGE	CCT/CRI	OPTIC	MEDIA 1	MEDIA 2
LWD3 Wall Downlight 3" Round	-15 (15W)	-27 (2700K 90CRI)	-10 (10° Spot)	(blank) (None)	(blank) (None)
	-20 (20W)	-30 (3000K 90CRI)	-30 (30° Narrow Flood)	CL (Clear Lens)	CL (Clear Lens)
	-25 (25W)	-35 (3500K 90CRI)	-50 (50° Flood)	MP (Solite Lens)	MP (Solite Lens)
SLWD3 Wall Downlight 3" Square	-30 (30W)	-40 (4000K 80CRI)	-80* (80° Wide Flood)	FR (Frosted Lens)	FR (Frosted Lens)
		-WD* (Warm Dim 98CRI)		LS (Linear Spread Lens)	LS (Linear Spread Lens)
				HEX (Hex Louver)	Holds 1 Media only when HEX selected
STANDARD FINISH		COASTAL COATING	REVISION	DRIVER	
-WT (Semi Gloss White)	(blank) (None)	-6 (Revision)	-S (Universal Dim Driver: 1%-100% 0-10V, TRIAC, ELV, 120V/277V)		
-MB (Matte Black)	-C (Coastal Coating)		ALTERNATIVE DRIVER		
			-L3 (Lutron Dim Driver: 1%-100% EcoSystem, 120V/277V)		
			-EL1 (EldoLED DALI Dim: 1%-100% DALI, 120V/277V)		
			-EL2 (EldoLED Dim: 0.1%-100% 0-10V, 120V/277V)		
			-DMX (DMX Dim: 1%-100% DMX, 120V/277V)		
NOTE: Ambient temperature rated for 25°C					

3" CYLINDER LED UP & DOWNLIGHT WALL MOUNT (EXAMPLE: LWU3-10-27-30-10-27-30-CL-CL-WT-6-S)

SHAPE	WATTAGE	CCT/CRI	↑ UP-OPTIC	↑ UP-MEDIA 1	↑ UP-MEDIA 2
LWU3 Wall Up & Downlight 3" Round	-15 (15W)	-27 (2700K 90CRI)	-10 (10° Spot)	(blank) (None)	(blank) (None)
	-20 (20W)	-30 (3000K 90CRI)	-30 (30° Narrow Flood)	CL (Clear Lens)	CL (Clear Lens)
	-25 (25W)	-35 (3500K 90CRI)	-50 (50° Flood)	MP (Solite Lens)	MP (Solite Lens)
SLWU3 Wall Up & Downlight 3" Square	-30 (30W)	-40 (4000K 80CRI)	-80* (80° Wide Flood)	FR (Frosted Lens)	FR (Frosted Lens)
		-WD* (Warm Dim 98CRI)		LS (Linear Spread Lens)	LS (Linear Spread Lens)
				HEX (Hex Louver)	Holds 1 Media only when HEX selected
↓ DOWN-OPTIC		↓ DOWN-MEDIA 1	↓ DOWN-MEDIA 2	STANDARD FINISH	COASTAL COATING
-10 (10°)	(blank) (None)	(blank) (None)	-WT (Semi Gloss White)	(blank)	-6 (Revision)
-30 (30°)	CL (Clear Lens)	CL (Clear Lens)	-MB (Matte Black)	(None)	
-50 (50°)	MP (Solite Lens)	MP (Solite Lens)	-C (Coastal Coating)		
-80 (80°)	FR (Frosted Lens)	FR (Frosted Lens)			
	LS (Linear Spread Lens)	LS (Linear Spread Lens)			
	HEX (Hex Louver)	Holds 1 Media only when HEX selected			
DRIVER					
-S (Universal Dim Driver: 1%-100% 0-10V, TRIAC, ELV, 120V/277V)					
ALTERNATIVE DRIVER					
-L3 (Lutron Dim Driver: 1%-100% EcoSystem, 120V/277V)					
-EL1 (EldoLED DALI Dim: 1%-100% DALI, 120V/277V)					
-EL2 (EldoLED Dim: 0.1%-100% 0-10V, 120V/277V)					
-DMX (DMX Dim: 1%-100% DMX, 120V/277V)					
NOTE: Ambient temperature rated for 25°C					

ACCESSORIES (3" CYLINDER)

OPTIC	MEDIA
C3-10-OPTIC (10° Spot)	C3-CL (Clear Lens)
C3-30-OPTIC (30° Narrow Flood)	C3-MP (Solite Lens)
C3-50-OPTIC (50° Flood)	C3-FR (Frosted Lens)
C3-80-OPTIC (80° Wide Flood)	C3-LS (Linear Spread Lens)
	C3-HEX (Hex Louver)

EMERGENCY

DRIVER	
EM-1000 (25W Remote Inverter)	EM-1003-CA (35W Remote Inverter) Title 20
EM-1002 (10W Remote Inverter)	EM-1004 (50W Remote Inverter)
EM-1003 (35W Remote Inverter)	EM-1006 (25W Remote Inverter) Title 20

5" WALL MOUNT ORDER MATRIX

5" CYLINDER LED DOWNLIGHT WALL MOUNT (EXAMPLE: LWD5-50-WD-80-MP-FR-WT-C-3-S)

SHAPE	WATTAGE	CCT/CRI	OPTIC	MEDIA 1	MEDIA 2
LWD5 Wall Downlight 5" Round	-15 (15W)	-27 (2700K 90CRI)	-10 (10° Spot)	(blank) (None)	(blank) (None)
	-20 (20W)	-30 (3000K 90CRI)	-30 (30° Narrow Flood)	CL (Clear Lens)	CL (Clear Lens)
	-25 (25W)	-35 (3500K 90CRI)	-50 (50° Flood)	MP (Solite Lens)	MP (Solite Lens)
SLWD5 Wall Downlight 5" Square	-30 (30W)	-40 (4000K 80CRI)	-80* (80° Wide Flood)	FR (Frosted Lens)	FR (Frosted Lens)
	-35 (35W)	-WD* (Warm Dim 98CRI)		LS (Linear Spread Lens)	LS (Linear Spread Lens)
	-40 (40W)			HEX (Hex Louver)	Holds 1 Media only when HEX selected
-50 (50W)					
STANDARD FINISH		COASTAL COATING	REVISION	DRIVER	
-WT (Semi Gloss White)	(blank) (None)	-3 (Revision)	-S (Universal Dim Driver: 1%-100% 0-10V, TRIAC, ELV, 120V/277V)		
-MB (Matte Black)	-C (Coastal Coating)		ALTERNATIVE DRIVER		
			-L3 (Lutron Dim Driver: 1%-100% EcoSystem, 120V/277V)		
			-EL1 (EldoLED DALI Dim: 1%-100% DALI, 120V/277V)		
			-EL2 (EldoLED Dim: 0.1%-100% 0-10V, 120V/277V)		
			-DMX (DMX Dim: 1%-100% DMX, 120V/277V)		
NOTE: Ambient temperature rated for 25°C, 50W option not available.					

5" CYLINDER LED UP & DOWNLIGHT WALL MOUNT (EXAMPLE: LWU5-10-27-30-10-27-30-CL-CL-WT-3-S)

SHAPE	WATTAGE	CCT/CRI	↑ UP-OPTIC	↑ UP-MEDIA 1	↑ UP-MEDIA 2
LWU5 Wall Up & Downlight 5" Round	-15 (15W)	-27 (2700K 90CRI)	-10 (10° Spot)	(blank) (None)	(blank) (None)
	-20 (20W)	-30 (3000K 90CRI)	-30 (30° Narrow Flood)	CL (Clear Lens)	CL (Clear Lens)
	-25 (25W)	-35 (3500K 90CRI)	-50 (50° Flood)	MP (Solite Lens)	MP (Solite Lens)
SLWU5 Wall Up & Downlight 5" Square	-30 (30W)	-40 (4000K 80CRI)	-80* (80° Wide Flood)	FR (Frosted Lens)	FR (Frosted Lens)
	-35 (35W)	-WD* (Warm Dim 98CRI)		LS (Linear Spread Lens)	LS (Linear Spread Lens)
	-40 (40W)			HEX (Hex Louver)	Holds 1 Media only when HEX selected
-50 (50W)					
↓ DOWN-OPTIC		↓ DOWN-MEDIA 1	↓ DOWN-MEDIA 2	STANDARD FINISH	COASTAL COATING
-10 (10°)	(blank) (None)	(blank) (None)	-WT (Semi Gloss White)	(blank)	-3 (Revision)
-30 (30°)	CL (Clear Lens)	CL (Clear Lens)	-MB (Matte Black)	(None)	
-50 (50°)	MP (Solite Lens)	MP (Solite Lens)	-C (Coastal Coating)		
-80 (80°)	FR (Frosted Lens)	FR (Frosted Lens)			
	LS (Linear Spread Lens)	LS (Linear Spread Lens)			
	HEX (Hex Louver)	Holds 1 Media only when HEX selected			
DRIVER					
-S (Universal Dim Driver: 1%-100% 0-10V, TRIAC, ELV, 120V/277V)					
ALTERNATIVE DRIVER					
-L3 (Lutron Dim Driver: 1%-100% EcoSystem, 120V/277V)					
-EL1 (EldoLED DALI Dim: 1%-100% DALI, 120V/277V)					
-EL2 (EldoLED Dim: 0.1%-100% 0-10V, 120V/277V)					
-DMX (DMX Dim: 1%-100% DMX, 120V/277V)					
NOTE: Ambient temperature rated for 25°C					

ACCESSORIES (5" CYLINDER)

OPTIC	MEDIA
C5-10-OPTIC (10° Spot)	C5-CL (Clear Lens)
C5-30-OPTIC (30° Narrow Flood)	C5-MP (Solite Lens)
C5-50-OPTIC (50° Flood)	C5-FR (Frosted Lens)
C5-80-OPTIC (80° Wide Flood)	C5-LS (Linear Spread Lens)
	C5-HEX (Hex Louver)

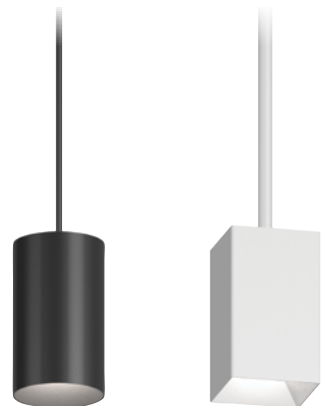
EMERGENCY

DRIVER	
EM-1000 (25W Remote Inverter)	EM-1003-CA (35W Remote Inverter) Title 20
EM-1002 (10W Remote Inverter)	EM-1004 (50W Remote Inverter)
EM-1003 (35W Remote Inverter)	EM-1006 (25W Remote Inverter) Title 20

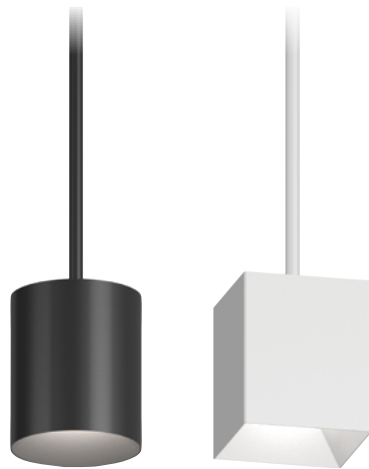
2", 3", 5" PENDANTS



2" pendants



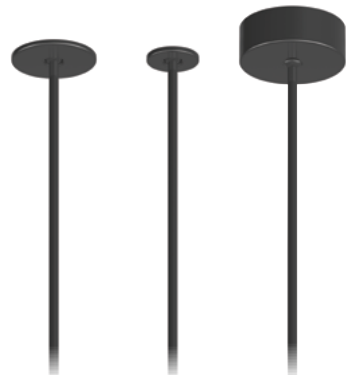
3" pendants



5" pendants

HANGING OPTIONS

Round Stem Mount



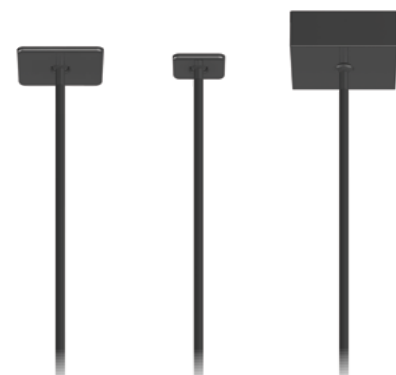
ST Retro Fit Stem
NCST New Construction Stem
Alternative Driver Stem

Round Cord Mount



WC Retro Fit White Cord
BC Retro Fit Black Cord
NCWC New Construction White Cord
NCBC New Construction Black Cord
Alternative Driver White Cord
Alternative Driver Black Cord

Square Stem Mount



ST Retro Fit Stem
NCST New Construction Stem
Alternative Driver Stem

Square Cord Mount



WC Retro Fit White Cord
BC Retro Fit Black Cord
NCWC New Construction White Cord
NCBC New Construction Black Cord
Alternative Driver White Cord
Alternative Driver Black Cord

2" ENTITY PENDANT ORDER MATRIX

2" ENTITY LED PENDANT (EXAMPLE: SS4021-R2-10-27-30-CL-CL-WT-C-1-S-ST)

SHAPE	WATTAGE	CCT/CRI	OPTIC	MEDIA 1	MEDIA 2
SS4021-R2 Entity Pendant Downlight 2" Round	-10 (10W)	-27 (2700K 90CRI)	-10 (10° Spot)	(blank) (None)	(blank) (None)
	-15 (15W)	-30 (3000K 90CRI)	-30 (30° Narrow Flood)	CL (Clear Lens)	CL (Clear Lens)
		-35 (3500K 90CRI)	-50 (50° Flood)	MP (Solite Lens)	MP (Solite Lens)
SS4021-S2 Entity Pendant Downlight 2" Square		-40 (4000K 80CRI)	-80* (80° Wide Flood)	FR (Frosted Lens)	FR (Frosted Lens)
		-WD* (Warm Dim 98CRI)	<small>*WD with 80 degree optic not CA title 24 compliant.</small>	LS (Linear Spread Lens)	LS (Linear Spread Lens)
		<small>* Media 1 lens required. For WD with 10°, 30°, 50° Optic use MP (Solite Lens). For WD with 80° Optic use FR (Frosted Lens).</small>	HEX (Hex Louver)	Holds 1 Media only when HEX selected	
STANDARD FINISH	COASTAL COATING	REVISION	DRIVER		
-WT (Semi Gloss White)	(blank) (None)	-1 (Revision)	-S (Universal Dim Driver: 1%-100% 0-10V, TRIAC, ELV, 120V/277V)		
-MB (Matte Black)	-C (Coastal Coating)		ALTERNATIVE DRIVER		
			-L3 (Lutron Dim Driver: 1%-100% EcoSystem, 120V/277V)		
			-EL1 (EldoLED DALI Dim: 1%-100% DALI, 120V/277V)		
			-EL2 (EldoLED Dim: 0.1%-100% 0-10V, 120V/277V)		
			-DMX (DMX Dim: 1%-100% DMX, 120V/277V)		
			NOTE: Ambient temperature rated for 25°C.		

HANGING OPTIONS

- ST** (Stem - Retro Fit)
- NCST** (Stem - New Construction)
- BC** (10' Black Cord - Retro Fit)
- WC** (10' White Cord - Retro Fit)
- NCBC** (10' Black Cord - New Construction)
- NCWC** (10' White Cord - New Construction)

ACCESSORIES (2" ENTITY)

OPTIC	
C2-10-OPTIC	(10° Spot)
C2-30-OPTIC	(30° Narrow Flood)
C2-50-OPTIC	(50° Flood)
C2-80-OPTIC	(80° Wide Flood)

MEDIA

C2-CL	(Clear Lens)
C2-MP	(Solite Lens)
C2-FR	(Frosted Lens)
C2-LS	(Linear Spread Lens)
C2-HEX	(Hex Louver)

EMERGENCY

DRIVER	
EM-1000	(25W Remote Inverter)
EM-1002	(10W Remote Inverter)
EM-1003	(35W Remote Inverter)
EM-1003-CA	(35W Remote Inverter) Title 20
EM-1004	(50W Remote Inverter)
EM-1006	(25W Remote Inverter) Title 20

3" ENTITY PENDANT ORDER MATRIX

3" ENTITY LED PENDANT (EXAMPLE: SS4021-R3-25-35-50-CL-MB-C-1-S-ST)

SHAPE	WATTAGE	CCT/CRI	OPTIC	MEDIA 1	MEDIA 2
SS4021-R3 Entity Pendant Downlight 3" Round	-15 (15W)	-27 (2700K 90CRI)	-10 (10° Spot)	(blank) (None)	(blank) (None)
	-20 (20W)	-30 (3000K 90CRI)	-30 (30° Narrow Flood)	CL (Clear Lens)	CL (Clear Lens)
	-25 (25W)	-35 (3500K 90CRI)	-50 (50° Flood)	MP (Solite Lens)	MP (Solite Lens)
SS4021-S3 Entity Pendant Downlight 3" Square	-30 (30W)	-40 (4000K 80CRI)	-80* (80° Wide Flood)	FR (Frosted Lens)	FR (Frosted Lens)
		-WD* (Warm Dim 98CRI)	<small>*WD with 80 degree optic not CA title 24 compliant.</small>	LS (Linear Spread Lens)	LS (Linear Spread Lens)
		<small>* Media 1 lens required. For WD with 10°, 30°, 50° Optic use MP (Solite Lens). For WD with 80° Optic use FR (Frosted Lens).</small>	HEX (Hex Louver)	Holds 1 Media only when HEX selected	
STANDARD FINISH	COASTAL COATING	REVISION	DRIVER		
-WT (Semi Gloss White)	(blank) (None)	-1 (Revision)	-S (Universal Dim Driver: 1%-100% 0-10V, TRIAC, ELV, 120V/277V)		
-MB (Matte Black)	-C (Coastal Coating)		ALTERNATIVE DRIVER		
			-L3 (Lutron Dim Driver: 1%-100% EcoSystem, 120V/277V)		
			-EL1 (EldoLED DALI Dim: 1%-100% DALI, 120V/277V)		
			-EL2 (EldoLED Dim: 0.1%-100% 0-10V, 120V/277V)		
			-DMX (DMX Dim: 1%-100% DMX, 120V/277V)		
NOTE: Ambient temperature rated for 25°C.					
HANGING OPTIONS					
-ST (Stem - Retro Fit)					
-NCST (Stem - New Construction)					
-BC (10' Black Cord - Retro Fit)					
-WC (10' White Cord - Retro Fit)					
-NCBC (10' Black Cord - New Construction)					
-NCWC (10' White Cord - New Construction)					

ACCESSORIES (3" ENTITY)

OPTIC	MEDIA
C3-10-OPTIC (10° Spot)	C3-CL (Clear Lens)
C3-30-OPTIC (30° Narrow Flood)	C3-MP (Solite Lens)
C3-50-OPTIC (50° Flood)	C3-FR (Frosted Lens)
C3-80-OPTIC (80° Wide Flood)	C3-LS (Linear Spread Lens)
	C3-HEX (Hex Louver)

EMERGENCY

DRIVER
EM-1000 (25W Remote Inverter)
EM-1002 (10W Remote Inverter)
EM-1003 (35W Remote Inverter)
EM-1003-CA (35W Remote Inverter) Title 20
EM-1004 (50W Remote Inverter)
EM-1006 (25W Remote Inverter) Title 20

5" ENTITY PENDANT ORDER MATRIX

5" ENTITY LED PENDANT (EXAMPLE: SS4021-R5-50-WD-80-MP-FR-WT-C-1-S-ST)

SHAPE	WATTAGE	CCT/CRI	OPTIC	MEDIA 1	MEDIA 2
SS4021-R5 Entity Pendant Downlight 5" Round	-15 (15W)	-27 (2700K 90CRI)	-10 (10° Spot)	(blank) (None)	(blank) (None)
	-20 (20W)	-30 (3000K 90CRI)	-30 (30° Narrow Flood)	CL (Clear Lens)	CL (Clear Lens)
	-25 (25W)	-35 (3500K 90CRI)	-50 (50° Flood)	MP (Solite Lens)	MP (Solite Lens)
SS4021-S5 Entity Pendant Downlight 5" Square	-30 (30W)	-40 (4000K 80CRI)	-80* (80° Wide Flood)	FR (Frosted Lens)	FR (Frosted Lens)
		-WD* (Warm Dim 98CRI)	<small>*WD with 80 degree optic not CA title 24 compliant.</small>	LS (Linear Spread Lens)	LS (Linear Spread Lens)
		<small>* Media 1 lens required. For WD with 10°, 30°, 50° Optic use MP (Solite Lens). For WD with 80° Optic use FR (Frosted Lens).</small>	HEX (Hex Louver)	Holds 1 Media only when HEX selected	
STANDARD FINISH	COASTAL COATING	REVISION	DRIVER		
-WT (Semi Gloss White)	(blank) (None)	-1 (Revision)	-S (Universal Dim Driver: 1%-100% 0-10V, TRIAC, ELV, 120V/277V)		
-MB (Matte Black)	-C (Coastal Coating)		ALTERNATIVE DRIVER		
			-L3 (Lutron Dim Driver: 1%-100% EcoSystem, 120V/277V)		
			-EL1 (EldoLED DALI Dim: 1%-100% DALI, 120V/277V)		
			-EL2 (EldoLED Dim: 0.1%-100% 0-10V, 120V/277V)		
			-DMX (DMX Dim: 1%-100% DMX, 120V/277V)		
NOTE: Ambient temperature rated for 25°C.					
HANGING OPTIONS					
-ST (Stem - Retro Fit)					
-NCST (Stem - New Construction)					
-BC (10' Black Cord - Retro Fit)					
-WC (10' White Cord - Retro Fit)					
-NCBC (10' Black Cord - New Construction)					
-NCWC (10' White Cord - New Construction)					

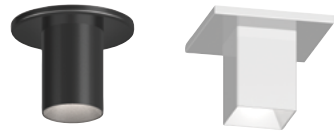
ACCESSORIES (5" ENTITY)

OPTIC	MEDIA
C5-10-OPTIC (10° Spot)	C5-CL (Clear Lens)
C5-30-OPTIC (30° Narrow Flood)	C5-MP (Solite Lens)
C5-50-OPTIC (50° Flood)	C5-FR (Frosted Lens)
C5-80-OPTIC (80° Wide Flood)	C5-LS (Linear Spread Lens)
	C5-HEX (Hex Louver)

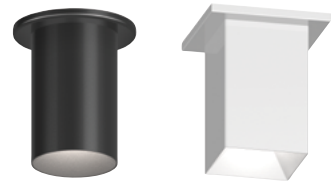
EMERGENCY

DRIVER
EM-1000 (25W Remote Inverter)
EM-1002 (10W Remote Inverter)
EM-1003 (35W Remote Inverter)
EM-1003-CA (35W Remote Inverter) Title 20
EM-1004 (50W Remote Inverter)
EM-1006 (25W Remote Inverter) Title 20

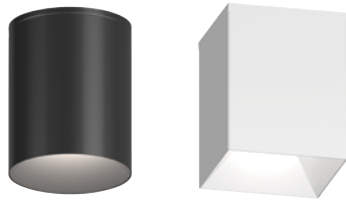
2", 3", 5" FLUSH MOUNT



2" flush mount shown with Standard Canopy

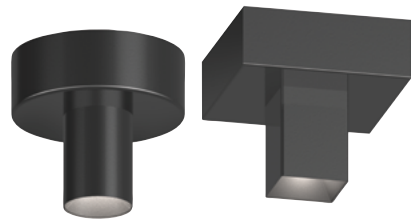


3" flush mount shown with Standard Canopy

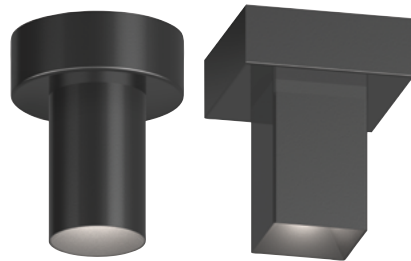


5" flush mount shown with Standard Canopy

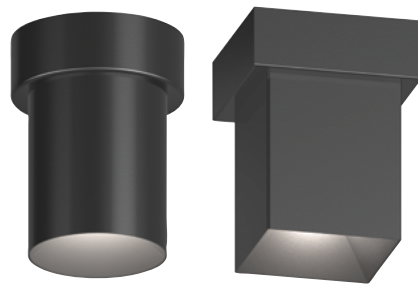
ALTERNATIVE DRIVER CANOPY



2"



3"



5"

2" FLUSH MOUNT ORDER MATRIX

2" ENTITY LED FLUSH MOUNT (EXAMPLE: SS4021-RF2-10-27-30-CL-CL-WT-C-1-S)

SHAPE	WATTAGE	CCT/CRI	OPTIC	MEDIA 1	MEDIA 2
SS4021-RF2 Entity Flush Downlight 2" Round	-10 (10W)	-27 (2700K 90CRI)	-10 (10° Spot)	(blank) (None)	(blank) (None)
	-15 (15W)	-30 (3000K 90CRI)	-30 (30° Narrow Flood)	CL (Clear Lens)	CL (Clear Lens)
SS4021-SF2 Entity Flush Downlight 2" Square		-35 (3500K 90CRI)	-50 (50° Flood)	MP (Solite Lens)	MP (Solite Lens)
		-40 (4000K 80CRI)	-80* (80° Wide Flood)	FR (Frosted Lens)	FR (Frosted Lens)
		-WD* (Warm Dim 98CRI)	*WD with 80 degree optic not CA title 24 compliant.	LS (Linear Spread Lens)	LS (Linear Spread Lens)
				HEX (Hex Louver)	Holds 1 Media only when HEX selected
STANDARD FINISH	COASTAL COATING	REVISION	DRIVER		
-WT (Semi Gloss White)	(blank) (None)	-1 (Revision)	-S (Universal Dim Driver: 1%-100% 0-10V, TRIAC, ELV, 120V/277V)		
-MB (Matte Black)	-C (Coastal Coating)		ALTERNATIVE DRIVER		
			-L3 (Lutron Dim Driver: 1%-100% EcoSystem, 120V/277V)		
			-EL1 (EldoLED DALI Dim: 1%-100% DALI, 120V/277V)		
			-EL2 (EldoLED Dim: 0.1%-100% 0-10V, 120V/277V)		
			-DMX (DMX Dim: 1%-100% DMX, 120V/277V)		
NOTE: Ambient temperature rated for 25°C.					

ACCESSORIES (2" ENTITY)

OPTIC
C2-10-OPTIC (10° Spot)
C2-30-OPTIC (30° Narrow Flood)
C2-50-OPTIC (50° Flood)
C2-80-OPTIC (80° Wide Flood)

MEDIA
C2-CL (Clear Lens)
C2-MP (Solite Lens)
C2-FR (Frosted Lens)
C2-LS (Linear Spread Lens)
C2-HEX (Hex Louver)

EMERGENCY

DRIVER
EM-1000 (25W Remote Inverter)
EM-1002 (10W Remote Inverter)
EM-1003 (35W Remote Inverter)
EM-1003-CA (35W Remote Inverter) Title 20
EM-1004 (50W Remote Inverter)
EM-1006 (25W Remote Inverter) Title 20

3" FLUSH MOUNT ORDER MATRIX

3" ENTITY LED FLUSH MOUNT (EXAMPLE: SS4021-RF3-10-27-30-CL-CL-WT-C-1-S)

SHAPE	WATTAGE	CCT/CRI	OPTIC	MEDIA 1	MEDIA 2
SS4021-RF3 Entity Flush Downlight 3" Round	-15 (15W)	-27 (2700K 90CRI)	-10 (10° Spot)	(blank) (None)	(blank) (None)
	-20 (20W)	-30 (3000K 90CRI)	-30 (30° Narrow Flood)	CL (Clear Lens)	CL (Clear Lens)
	-25 (25W)	-35 (3500K 90CRI)	-50 (50° Flood)	MP (Solite Lens)	MP (Solite Lens)
SS4021-SF3 Entity Flush Downlight 3" Square	-30 (30W)	-40 (4000K 80CRI)	-80* (80° Wide Flood)	FR (Frosted Lens)	FR (Frosted Lens)
		-WD* (Warm Dim 98CRI)	*WD with 80 degree optic not CA title 24 compliant.	LS (Linear Spread Lens)	LS (Linear Spread Lens)
		* Media 1 lens required. For WD with 10°, 30°, 50° Optic use MP (Solite Lens). For WD with 80° Optic use FR (Frosted Lens).		HEX (Hex Louver)	Holds 1 Media only when HEX selected
STANDARD FINISH	COASTAL COATING	REVISION	DRIVER		
-WT (Semi Gloss White)	(blank) (None)	-1 (Revision)	-S (Universal Dim Driver: 1%-100% 0-10V, TRIAC, ELV, 120V/277V)		
-MB (Matte Black)	-C (Coastal Coating)		ALTERNATIVE DRIVER		
			-L3 (Lutron Dim Driver: 1%-100% EcoSystem, 120V/277V)		
			-EL1 (EldoLED DALI Dim: 1%-100% DALI, 120V/277V)		
			-EL2 (EldoLED Dim: 0.1%-100% 0-10V, 120V/277V)		
			-DMX (DMX Dim: 1%-100% DMX, 120V/277V)		
NOTE: Ambient temperature rated for 25°C.					

ACCESSORIES (3" ENTITY)

OPTIC
C3-10-OPTIC (10° Spot)
C3-30-OPTIC (30° Narrow Flood)
C3-50-OPTIC (50° Flood)
C3-80-OPTIC (80° Wide Flood)

MEDIA
C3-CL (Clear Lens)
C3-MP (Solite Lens)
C3-FR (Frosted Lens)
C3-LS (Linear Spread Lens)
C3-HEX (Hex Louver)

EMERGENCY

DRIVER
EM-1000 (25W Remote Inverter)
EM-1002 (10W Remote Inverter)
EM-1003 (35W Remote Inverter)
EM-1003-CA (35W Remote Inverter) Title 20
EM-1004 (50W Remote Inverter)
EM-1006 (25W Remote Inverter) Title 20

5" FLUSH MOUNT ORDER MATRIX

5" ENTITY LED FLUSH MOUNT (EXAMPLE: SS4021-RF5-10-27-30-CL-CL-WT-C-1-S)

SHAPE	WATTAGE	CCT/CRI	OPTIC	MEDIA 1	MEDIA 2
SS4021-RF5 Entity Flush Downlight 5" Round	-15 (15W)	-27 (2700K 90CRI)	-10 (10° Spot)	(blank) (None)	(blank) (None)
	-20 (20W)	-30 (3000K 90CRI)	-30 (30° Narrow Flood)	CL (Clear Lens)	CL (Clear Lens)
	-25 (25W)	-35 (3500K 90CRI)	-50 (50° Flood)	MP (Solite Lens)	MP (Solite Lens)
SS4021-SF5 Entity Flush Downlight 5" Square	-30 (30W)	-40 (4000K 80CRI)	-80* (80° Wide Flood)	FR (Frosted Lens)	FR (Frosted Lens)
		-WD* (Warm Dim 98CRI)	*WD with 80 degree optic not CA title 24 compliant.	LS (Linear Spread Lens)	LS (Linear Spread Lens)
		* Media 1 lens required. For WD with 10°, 30°, 50° Optic use MP (Solite Lens). For WD with 80° Optic use FR (Frosted Lens).		HEX (Hex Louver)	Holds 1 Media only when HEX selected
STANDARD FINISH	COASTAL COATING	REVISION	DRIVER		
-WT (Semi Gloss White)	(blank) (None)	-1 (Revision)	-S (Universal Dim Driver: 1%-100% 0-10V, TRIAC, ELV, 120V/277V)		
-MB (Matte Black)	-C (Coastal Coating)		ALTERNATIVE DRIVER		
			-L3 (Lutron Dim Driver: 1%-100% EcoSystem, 120V/277V)		
			-EL1 (EldoLED DALI Dim: 1%-100% DALI, 120V/277V)		
			-EL2 (EldoLED Dim: 0.1%-100% 0-10V, 120V/277V)		
			-DMX (DMX Dim: 1%-100% DMX, 120V/277V)		
NOTE: Ambient temperature rated for 25°C.					

ACCESSORIES (5" ENTITY)

OPTIC
C5-10-OPTIC (10° Spot)
C5-30-OPTIC (30° Narrow Flood)
C5-50-OPTIC (50° Flood)
C5-80-OPTIC (80° Wide Flood)

MEDIA
C5-CL (Clear Lens)
C5-MP (Solite Lens)
C5-FR (Frosted Lens)
C5-LS (Linear Spread Lens)
C5-HEX (Hex Louver)

EMERGENCY

DRIVER
EM-1000 (25W Remote Inverter)
EM-1002 (10W Remote Inverter)
EM-1003 (35W Remote Inverter)
EM-1003-CA (35W Remote Inverter) Title 20
EM-1004 (50W Remote Inverter)
EM-1006 (25W Remote Inverter) Title 20

CSL

CYLINDERS



See Product Video



WET
LOCATION



DAMP
LOCATION



IC
RATED

SSS
AIRTIGHT



DIMMABLE

JA8 TITLE
COMPLIANT
90 CRI OPTION ONLY

5 YEAR
LIMITED WARRANTY

14508 Nelson Avenue | City of Industry, CA 91744 | P: 626.336.4511 | F: 626.330.4266 | www.csllighting.com

A Division of Troy-CSL Lighting, Inc.

Copyright ©2023 Troy-CSL Lighting, Inc.

CSL

CREATIVE SYSTEMS LIGHTING